

# Overview by business / by region

\* Torsen is a registered trademark of JTEKT Corporation.  
\* ITCC is a registered trademark of JTEKT Corporation.

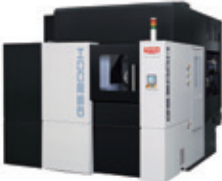
## Overview by business

**TOYODA**

**Machine Tools & Mechatronics business Other**

**11.9%** 156.3 billion yen

To support the evolution of *monozukuri*, we increase the efficiency of manufacturing lines by improving machine tools.

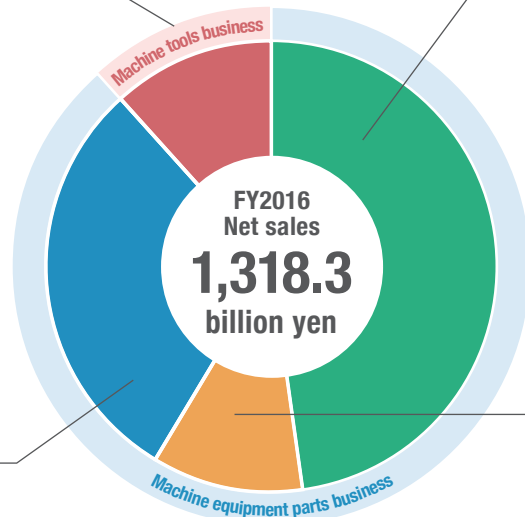


**Koyo**

**Bearing business**

**28.5%** 375.4 billion yen

With bearings that reduce energy loss, JTEKT offers the energy-saving technology we have cultivated to a variety of industries

**JTEKT**

**Steering business**

**48.4%** 638.2 billion yen

JTEKT's steering systems boast the world's No. 1 share, and are a favorite of customers around the globe.



**JTEKT**

**Driveline business**

**11.2%** 148.2 billion yen

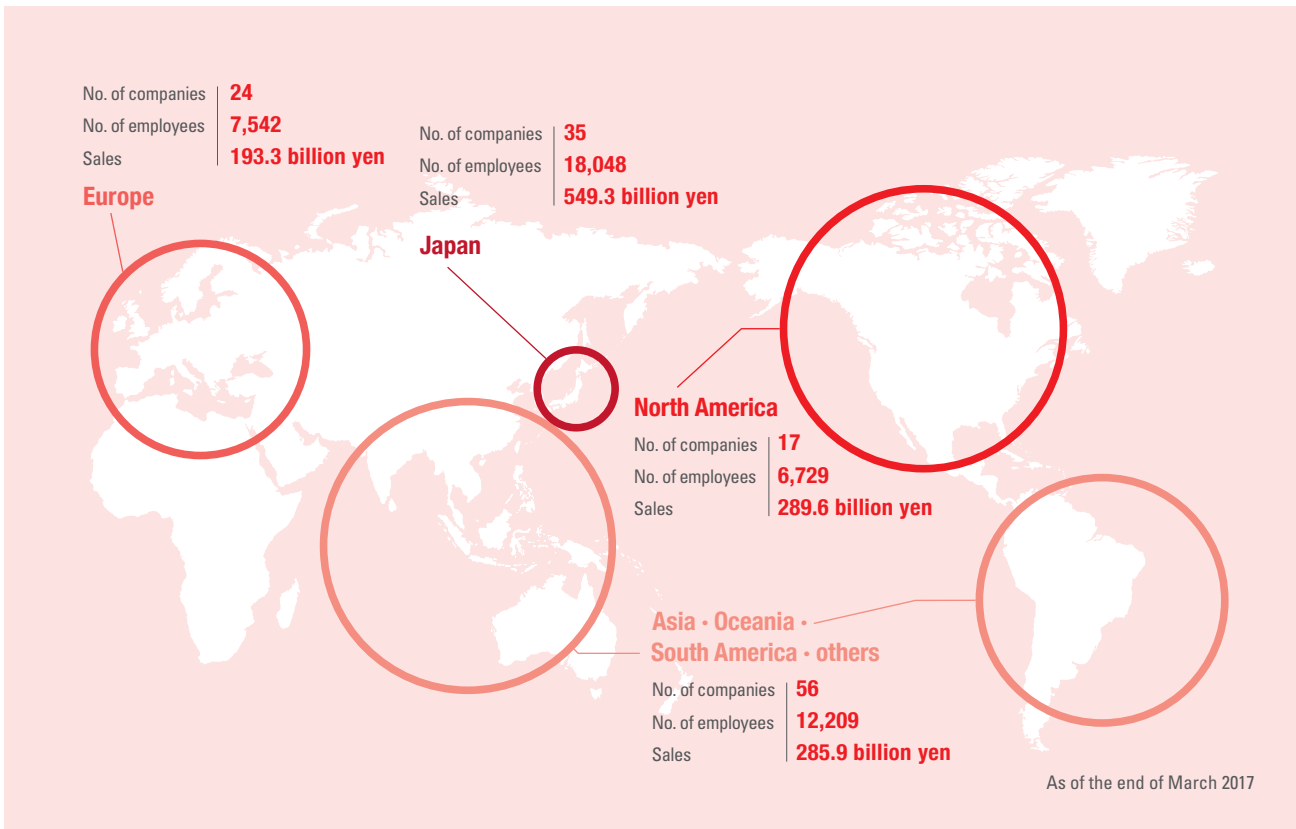
We boast the world's No. 1 share in the Torque-Sensing Limited Slip Differential (TORSEN) and in the intelligent torque controlled coupling (ITCC), which are used in four-wheel drive vehicles and sports cars, and which support a sophisticated driving experience.



FY 2016 (From April 1st, 2016 to March 31st, 2017)

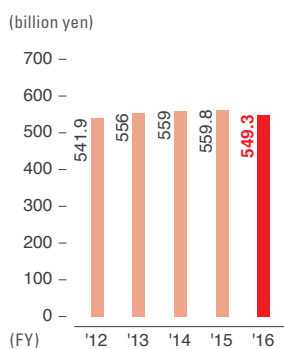
Category / business	Sales this term (billion yen)	Composition ratio (%)	Rate of change compared with previous term (%)
<b>Machine equipment parts business</b>	<b>1,161.9</b>	<b>88.1</b>	<b>△5.9</b>
Steering business	638.2	48.4	△5.9
Driveline business	148.2	11.2	0.0
Bearing business	375.4	28.5	△8.1
<b>Machine tools business</b>	<b>156.3</b>	<b>11.9</b>	<b>△5.1</b>
Machine Tools & Mechatronics business Other	156.3	11.9	△5.1

## Overview by region

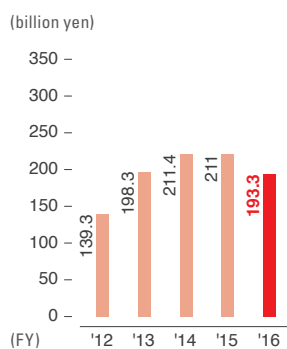


## Sales trend by region

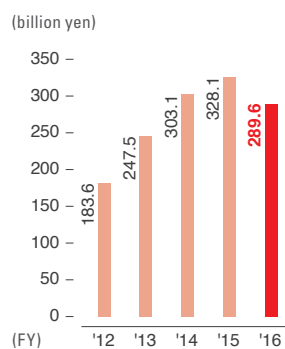
### Japan



### Europe



### North America



### Asia · Oceania · South America · others

