

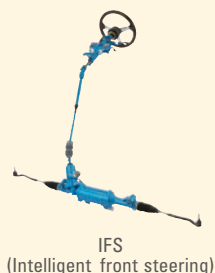
Underpinning society through manufacturing. That is the significance of JTEKT's existence.



Automotive-related

Steering systems

JTEKT



The steering system is the mechanism responsible for turning a vehicle and the sole part that allows the driver to feel at one with the car. JTEKT were the first in the world to develop and mass produce motor-assisted electric power steering. As our pioneering industry, we offer all types of steering systems to major automotive manufacturers across the globe.



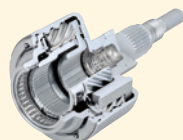
Automotive bearings



Needle bearings

Driveline components

JTEKT



Driveshafts



CVT oil pumps

Driveline components are responsible for moving the car. Including ITCCs (electronically controlled 4WD couplings) already holding an overwhelming world share for 4WD units, TORSENs (torque sensing full time 4WD), drive shafts, propeller shafts and so on, JTEKT are providing major automotive manufacturers around the world with driveline systems connecting the engine to the tires.



Camshaft grinder (GC20M)



Special-purpose machines
(Top Center)

Most people probably don't have the opportunity to see JTEKT's products often. However our products are used widely in general industries like automotive-related industries, steel, railway, aircraft/aerospace, construction and agricultural machinery, wind power generation and so on, supporting society close to you.

JTEKT

"JTEKT" is the brand name used for JTEKT's steering systems and driveline components.

Koyo

"Koyo" is the brand name used for JTEKT's bearings and oil seal products.

TOYODA

"TOYODA" is the brand name used for JTEKT's machine tools.

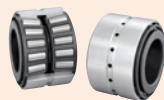
General industry-related

Bearings

Koyo



Bearings for extreme special environment



Bearings for N700 series bullet trains



Machine tool bearings



Aircraft bearings



Windmill power generator bearings



Steel mill bearings

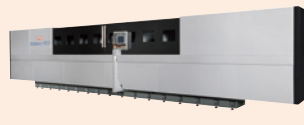
Bearings have the role of supporting the rotating parts of all mechanical devices. Because they are a functional component critical to the industrial domain, they are known as the "backbone of industry". Centered on automotive bearings positioned in the world's top group, JTEKT are contributing to customers around the globe starting with wind power generation and covering a diverse range of fields such as energy, steel, construction machinery, agricultural machinery, and aircraft.

Machine tools & mechatronics

TOYODA



Safety PLC (TOYOPUC)



Large combination grinder (Select G7)



Combination grinder (TG4)



Machining centers

Machine tools are machines made to build machines. They are commonly referred to as "Mother Machines". JTEKT are one of the few companies in the world to possess machine tool technology at the same time as being a component manufacturer ourselves. We provide customers involved in manufacturing all across the globe with products such as grinders that boast the highest sales in the world, ultra precision machines capable of nanometer machining, high speed/high accuracy machining centers and so on.

* IFS, ITCC and TORSER are trademarks of JTEKT Corporation.