

Support society through *monozukuri*. That is the significance of JTEKT's existence.



Automotive-related

C-EPS
(Column type electric power steering)

IFS
(Intelligent front steering)

Hydraulic power
steering systems

The steering system is the mechanism responsible for turning a vehicle and the sole part that allows the driver to feel at one with the car. JTEKT were the first in the world to develop and mass produce motor-assisted electric power steering. As our pioneering industry, we offer all types of steering systems to major automotive manufacturers across the globe.

Steering systems

JTEKT



Automotive bearings



Needle bearings

Koyo
Torrington. Needle Roller Bearings

ITCC
(Intelligent torque
controlled couplings)

TORSEN
(Torque sensing
full time 4WD)

Driveshafts

Electric pumps for
idle reduction

Driveline components are responsible for moving the car. Including ITCCs (electronically controlled 4WD couplings) already holding an overwhelming world share for 4WD units, TORSENs (torque sensing full time 4WD), drive shafts, propeller shafts and so on, JTEKT are providing major automotive manufacturers around the world with driveline systems connecting the engine to the tires.

Driveline components

JTEKT



Camshaft combination grinders
(GC20R)



Special-purpose machines
(Top Center)

Most people probably don't have the opportunity to see JTEKT's products often. However our products are used widely in general industries like automotive-related industries, steel, railway, aircraft/aerospace, construction and agricultural machinery, wind power generation and so on, supporting society close to you.

JTEKT "JTEKT" is the brand name used for JTEKT's steering systems and driveline components.

Koyo "Koyo" is the brand name used for JTEKT's bearings and oil seal products.

TOYODA "TOYODA" is the brand name used for JTEKT's machine tools.

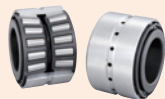
General industry-related

Bearings

Koyo



Bearings for extreme special environment



Bearings for N700 series bullet trains



Machine tool bearings



Aircraft bearings



Windmill power generator bearings



Steel mill bearings

Bearings have the role of supporting the rotating parts of all mechanical devices. Because they are a functional component critical to the industrial domain, they are known as the "backbone of industry". Centered on automotive bearings positioned in the world's top group, JTEKT are contributing to customers around the globe starting with wind power generation and covering a diverse range of fields such as energy, steel, construction machinery, agricultural machinery, and aircraft.

Machine tools & mechatronics

TOYODA



Safety PLC (TOYOPUC)



CNC cylindrical grinders (e300G)



Machining centers (FH1250)

Machine tools are machines made to build machines. They are commonly referred to as "Mother Machines". JTEKT is one of the few companies in the world to possess machine tool technology at the same time as being a component manufacturer ourselves. We provide customers involved in manufacturing all across the globe with products such as grinders that boast the highest sales in the world, ultra precision machines capable of nanometer machining, high speed/high accuracy machining centers and so on.

* IFS, C-EPS, ITCC and TORSSEN are trademarks of JTEKT Corporation. Torrington is the trade mark of US company, The TIMKEN Company.