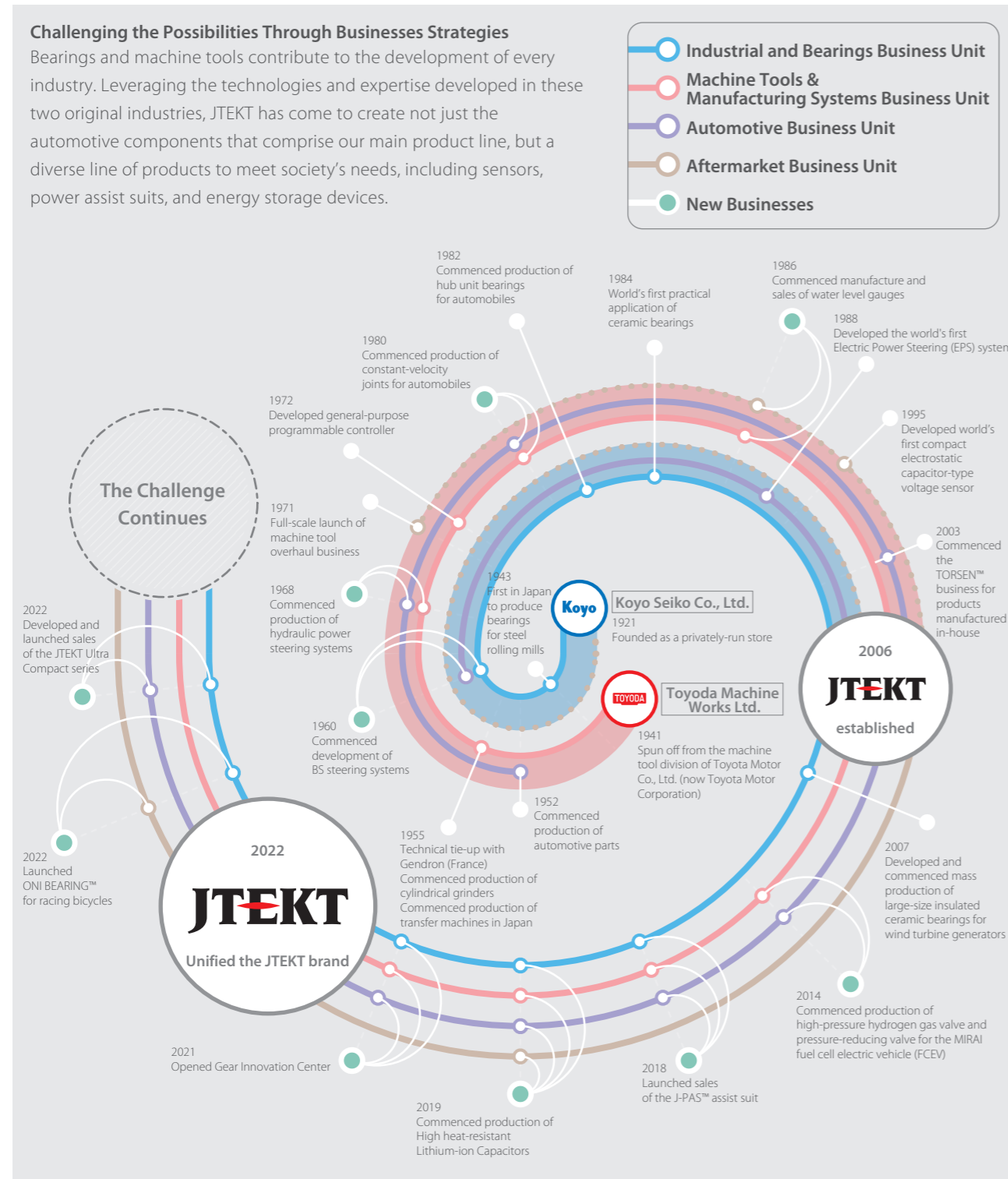


History of JTEKT

Since their establishment, Koyo Seiko and Toyoda Machine Works have continually perfected their technologies to provide high-quality and reliable products. JTEKT was established in 2006 with the merger of these companies. Going forward, we will continue to produce “No. 1 & Only One” products and move forward in our ambition to be a company that contributes to society.



Initiatives Based on Synergies between JTEKT Groups and Their Results

JTEKT Automotive Business Unit × Machine Tools & Manufacturing Systems Business Unit = Water Level Gauges

Using the advanced technologies and know-how that we accumulated in the automotive parts and machine tool businesses, we developed sensors that boast high precision, high quality, and high reliability, and in 1986 we commenced production and sales of throw-in type water level meters using pressure sensors. To date, we have delivered more than 42,000 water level meters and boast the number two share* of the domestic market.

Our water level meters feature long lives, energy-saving, and maintenance-free specifications. They are used to monitor water levels in manholes to prevent inland flooding and for disaster mitigation such as crisis management for monitoring reservoirs and small and medium-sized rivers. These products contribute to convenience, comfort, and safety in a variety of fields including public infrastructure, healthcare, social welfare, and vehicles.

* Percentage share is based on our company research.



JTEKT Thermo Systems Corporation × JTEKT Fluid Power Systems Corporation × JTEKT = High heat-resistant Lithium-ion Capacitors

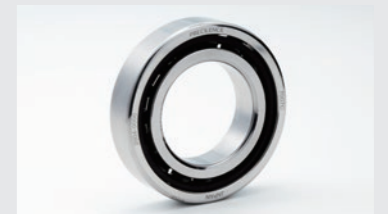
We develop High heat-resistant Lithium-ion Capacitors that achieve heat resistance from -40°C to 85°C, a world's first, for use as auxiliary power supply devices in EPS with the aim of solving the problem of insufficient output of vehicle power supplies, an issue when installing EPS in large vehicles. These capacitors feature high durability, safety, and reliability, and as a result, it is expected that they will be used in a wide range of fields, not limited to automotive auxiliary power sources, but also power stabilization for renewable energy such as wind power.

During the manufacturing process, we use machinery produced in-house to make use of Group strengths including machine-tool spindle control technology, cylindrical grinder



JTEKT Precision Bearing Corporation × JTEKT = PRECILENCE™ Ultra-High-Precision Bearings

Our machine tool business is also a user of bearings. Increase the processing precision of machining centers, we collaborated with Group companies to develop bearings for main shafts that outperform earlier products. PRECILENCE™ bearings boast ultra-high-precision rotation performance and are used not only in machine tools, but a variety of industries.



JTEKT Grinding Tools Corporation × JTEKT Machine Systems Corporation × JTEKT = Vertical Multi-Process Grinders

The grinding wheel technology of JTEKT and JTEKT Grinding Tools Corporation was integrated with vertical multi-head grinders, a strength of JTEKT Machine Systems.

We propose new forms of manufacturing (monozukuri) in growth fields including robots, semiconductor manufacturing equipment, machine tools, agriculture and construction machinery, and energy machinery.

