



JTEKT

CORPORATE GUIDE

A future that's always expanding...

Why?

What makes **JTEKT** essential?





Because we challenge

the

POSSIBILITIES

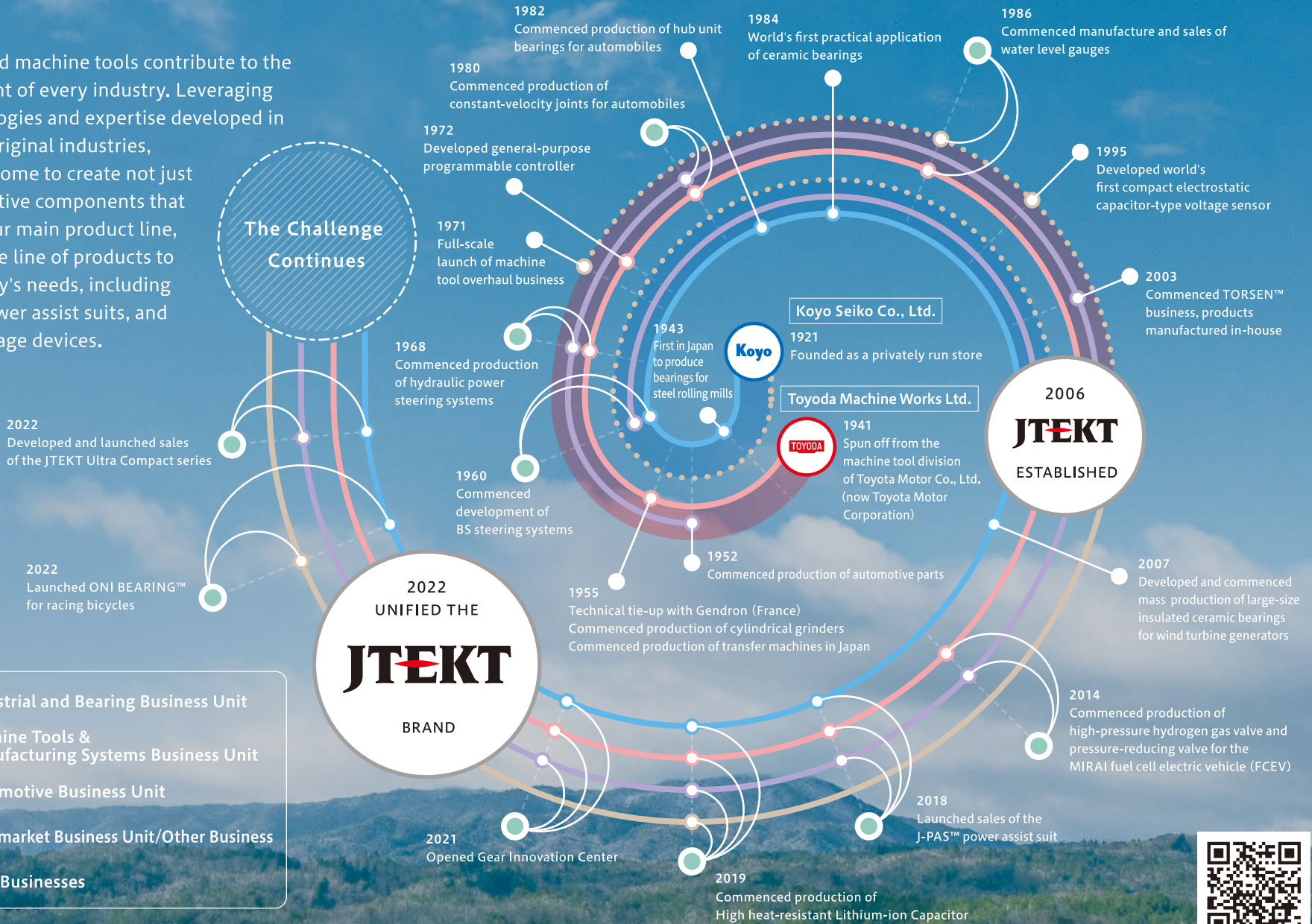
that lie ahead.

Challenging the Possibilities Through Businesses Synergies

JTEKT's Challenge

Bearings and machine tools contribute to the development of every industry. Leveraging the technologies and expertise developed in these two original industries, JTEKT has come to create not just the automotive components that comprise our main product line, but a diverse line of products to meet society's needs, including sensors, power assist suits, and energy storage devices.

The Challenge Continues



- Industrial and Bearing Business Unit
- Machine Tools & Manufacturing Systems Business Unit
- Automotive Business Unit
- Aftermarket Business Unit/Other Business
- New Businesses



Check the Movie

JTEKT Group companies around the world are united in taking on the challenge of the possibilities that lie ahead.

In 2006, bearing manufacturer Koyo Seiko Co., Ltd. and machine tool manufacturer Toyoda Machine Works Ltd. merged to form JTEKT Corporation. Following the merger, the brands for each business were used separately, with automotive parts under the JTEKT brand, bearings under the Koyo brand, and machine tools under the TOYODA brand. In 2022, these were all unified under the JTEKT brand. Each and every employee across the entire company now works together to advance our "ONE JTEKT" program.

At the same time, a company must be a vessel and a tool that contributes to society. To this end, as JTEKT grows, gradually yet steadily, we are returning the profits of business activities in the form of tax payments and employment. Even amid today's uncertain market environment, JTEKT's future is bright and full of hope. Why? Because the bearing and machine tools units that comprise our original business remain close to the materials industry underpinning the development of all industries, and these units will continue to be needed, regardless of any changes in the goods that end up being produced.

While maximizing the synergies between our businesses "for the Earth, for society, and for our customers," JTEKT will continue to take on the challenge of pursuing future possibilities.



President

佐藤和弘

Kazuhiro Sato

JTEKT

CONTENTS

P1	Why? JTEKT Message from the President
P5	ANSWER J · JOY T · TECHNOLOGY EVOLUTION E · EARTH K · KEY OF LIFE T · TEAM JTEKT
P15	HISTORY
P17	INTRODUCTION TO OUR BUSINESS UNITS ● INDUSTRIAL AND BEARING BUSINESS UNIT ● MACHINE TOOLS & MANUFACTURING SYSTEMS BUSINESS UNIT ● AUTOMOTIVE BUSINESS UNIT ● AFTERMARKET BUSINESS UNIT ● SOWING SEEDS FOR THE FUTURE ● GROUP LINKS
P23	CSR

Shaping

the **HAPPINESS**

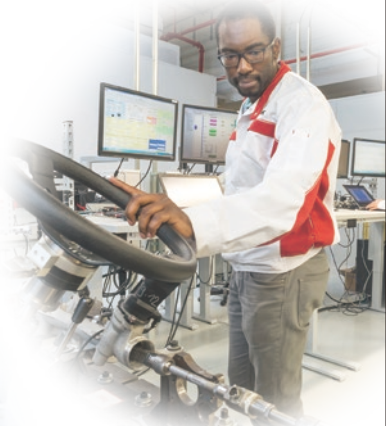
that lies ahead.



Joy

Happiness born of contribution.

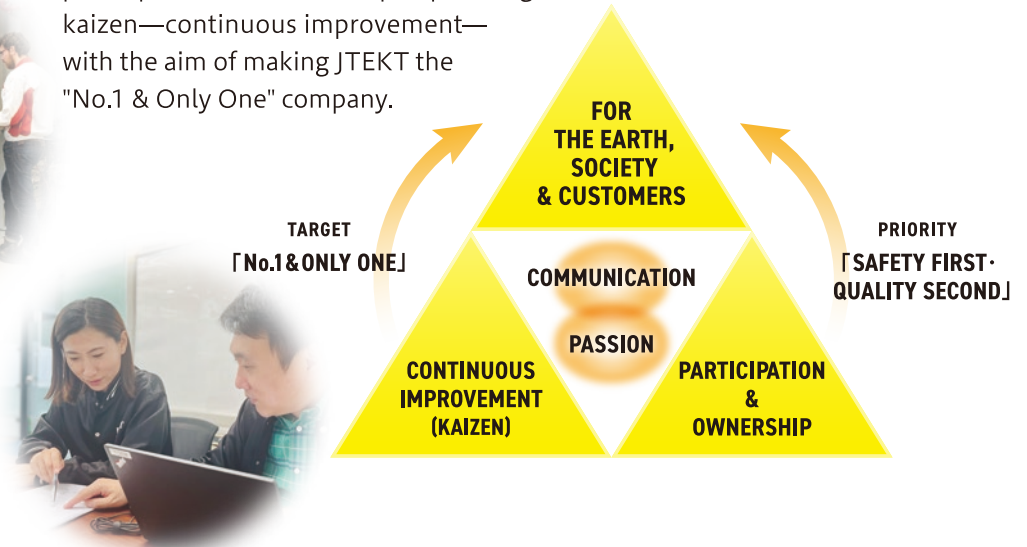
Our company is a vessel for contributing to society. As a manufacturing company, JTEKT has continued to support society by seeking to provide high quality at reasonable prices and working to ensure stable tax payments and employment while keeping environmental considerations in mind. We believe that delivering happiness to everyone involved is the greatest social contribution we can make. Believing in the joy that comes from contributing, JTEKT will continue to move forward while increasing our corporate value.



Aiming to Be the "No.1 & Only One" Company

JTEKT Basic Principle

Every single JTEKT employee seriously considers and actively discusses what we can do for the Earth, for society, and for our customers. Transcending the boundaries between our group companies and business units, we ensure total participation and ownership in pursuing kaizen—continuous improvement—with the aim of making JTEKT the "No.1 & Only One" company.



Realizing

the **DREAMS**

that lie ahead.



TECHNOLOGY EVOLUTION

Provide new values to manufacturing. (monozukuri)

We combine our strengths in bearings, machine tools and manufacturing systems, automotive parts, and gears to create products that contribute to our society.
The synergies produced by interweaving the JTEKT Group's businesses promote manufacturing evolution.

Bearings

Used in rotating equipment throughout every industry from automobiles to industrial machinery, bearings are crucial in reducing energy loss and heat caused by friction, and in improving energy efficiency. Developing and manufacturing superior quality bearings that can be used in a variety of environments, JTEKT is helping to establish a safe and secure social infrastructure and to conserve energy with a clear view of the future.



Automotive Parts

Rapid technological innovation is bringing the auto industry closer to realizing its goal of full-scale autonomous driving. JTEKT is a leading supplier of components that control automobiles' running and turning functions. Leveraging the many various technologies we have developed over the years, we have created such advanced products as J-EPICS™ steer-by-wire system, an indispensable element of advanced autonomous driving that fulfills the expectations of society and our customers.



Machine Tools and Systems

Machine tools are needed to create all kinds of machines and parts. In addition to constantly evolving machine tools, JTEKT contributes to our customers' manufacturing operations by providing and supporting production systems that promote labor-saving, automation, IoE* solutions, and more. We aim to apply our "Only One" technology, combining expertise in a wide range of manufacturing fields, to provide solutions to issues faced by society.



*IoE: Internet of Everything

Gears

JTEKT actively conducts research and development to create higher precision gears, utilizing the know-how cultivated in the fields of automotive parts and machine tools. With these gears, we aim to contribute to the development of drive units for electric vehicles and industrial robots with higher precision gears.



Nurturing

the **SPIRIT**

that lies ahead.

J

T

E

K

T



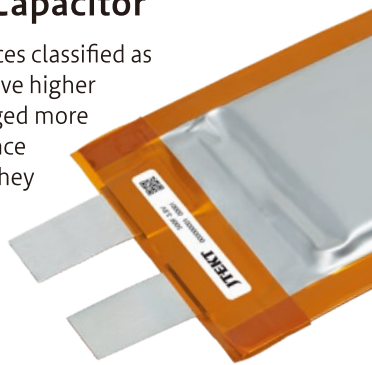
EARTH

Protect the rich earth for future children.

Having formulated our "Environmental Challenge 2050," JTEKT is working to achieve carbon neutrality by 2035 through environmentally friendly management.

High heat-resistant Lithium-ion Capacitor

Lithium-ion capacitors are electric power storage devices classified as rechargeable batteries. Compared to batteries, they have higher instantaneous output and can be charged and discharged more rapidly. JTEKT capacitors feature superior heat resistance and are capable of supplying large currents, meaning they can be used not only in automobiles but also as power supply devices in a wide variety of industries. They contribute to carbon neutrality by minimizing deterioration even after repeated charging and discharging, and by reducing power consumption.



Reducing CO₂ Emissions in Manufacturing Processes

JTEKT is working to reduce CO₂ emissions at all of our plants and offices, both in Japan and overseas. Our efforts not only involve constant improvement activities and introduction of renewable energy sources, but also energy-saving methods made possible through innovations in production technology. The entire JTEKT Group is united in achieving our goal of carbon neutrality not only through our constant improvement activities and the introduction of renewable energy sources, but also through innovations in production technology and the use of IT technology, including visualization of energy use.



EV-Compatible and eAxle-Supporting Products

There are demands that "eAxle," a drive unit that plays a key role in the core of electric vehicles, be made more compact as well as offer higher output and density. To that end, JTEKT has developed "JTEKT Ultra Compact Diff.™," a compact differential gear with the same strength but with half the volume. We will continue to develop compact, high-performance components that help improve the electric power consumption and cruising range of EVs.



Bearings for Wind Turbines

Tremendous focus is now being directed towards wind power as a source of renewable energy. JTEKT bearings are being utilized in over 20,000 wind power generators around the world.



Preserving Biodiversity

Aiming to preserve biodiversity and ecosystems, we have implemented a policy of "One Plant, One Project" at 14 plants and offices throughout Japan. For example, at our Tadomisaki Plant, we are working to protect the nesting grounds of the little tern, which has been designated a rare bird species, and at our Iga Proving Ground, we conduct forest conservation activities around the site.



Creating
the **EXCITEMENT**
that lies ahead.



KEY OF LIFE

Contribute to safe, secure and comfort life.

JTEKT combines our existing technologies and expertise to create new technologies that will help solve future social issues. We also place great importance on community contribution programs to help people enjoy safer and more comfortable lifestyles.

J-PAS™ Series Power Assist Suit

Intending to address social issues such as the declining birthrate and aging population, labor shortages, and an increasing number of occupational accidents, we created "J-PAS™" Series power assist suit by utilizing the assist technologies and safety design technologies developed in our existing businesses. The wearer's movements are detected by sensors in the suit, which then drive the suit's motors, properly coordinating the required assistance with the movements. The "J-PAS fleairy™" model, developed for caregivers, is expected to reduce lower-back burden in crouching positions, which is particularly common in nursing care work, making it effective in a wide range of caregivers' tasks. Praised for the advanced and original design that incorporates the user's perspective, the suit was awarded the Excellence Award (Business and Social Implementation Division) at the 10th Robot Awards.



Pairdriver™

JTEKT has developed Pairdriver™, a steering control system that connects and harmonizes the automatic driving system with the driver's intention via electric power steering (EPS). Pairdriver supports safe, secure, and comfortable autonomous driving.



Support for Autonomous Driving and MaaS (Mobility as a Service)

We continue to make progress in the development of autonomous driving and the shift to electric vehicles for the commercial segment, applying the technologies cultivated in our development of electric power steering. A typical example is the technology known as "positioning control" that stops buses right next to the bus stop, with practically no gap. With these and other efforts, we support the creation of a safer and more secure traffic environment.



Promoting Sports and Contributing to the Community

JTEKT is home to many athletes who balance activity at the top levels of sport with the company's business. In addition to our support for athletes competing globally in volleyball, badminton, and wrestling, we promote sports and contribute to local communities through volunteer activities such as sports classes and neighborhood cleanups.



Opening

the

DOOR

that lies ahead.



TEAM JTEKT

Development of organization and HR to be trusted by society and to contribute to society.

Making good products starts with developing good people.

AT JTEKT, we offer our employees a wide range of activities and a comfortable working environment.

JTEKT Academy

JTEKT Academy was established in 1941 as our in-house training facility. Designed to train new hires in technical positions, including those employed at JTEKT group companies, the Academy's one-year curriculum provides academic and practical training that addresses the needs of the workplace, with education for human resource development that includes manufacturing knowledge and skills and the basics of being a member of society. JTEKT also supports efforts to acquire additional qualifications and provides training for participants in the WorldSkills. Some employees participate in the WorldSkills national and international competitions after graduating from the Academy. In addition, many past graduates have received the Medal with Yellow Ribbon, awarded to "contemporary master craftsmen" recognized for their outstanding skills. Thus we continue the tradition of advanced technology.



Diversity

Incorporating and utilizing human resources with diverse values is essential for corporate growth. To promote true diversity in the workplace, JTEKT conducts diversity training for all employees. We are also actively promoting the full participation of women while supporting a balance between work and childcare or nursing care as well as the active participation of employees with disabilities.



Group Network

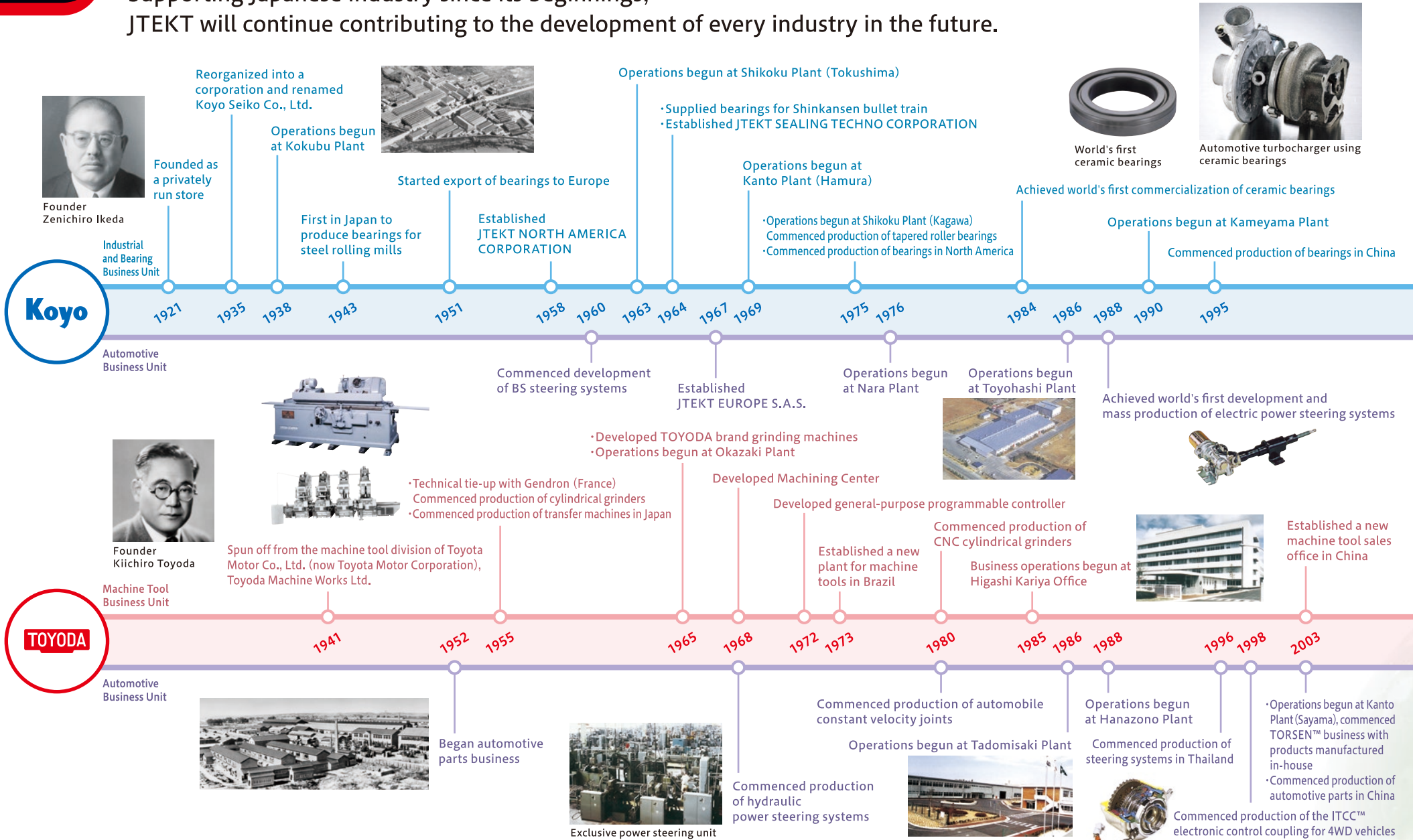
Operating under the "One JTEKT" slogan, the JTEKT Group has changed direction and integrated the Group's businesses. To continue providing the value-added products and services that please our customers, the 50,000 employees of the JTEKT Group around the world engage in flat, speedy discussions based on the same shared values, demonstrating flexible, innovative group synergies unconstrained by fixed ideas.



HISTORY

Two traditions united, thus beginning a new story.

Supporting Japanese industry since its beginnings, JTEKT will continue contributing to the development of every industry in the future.



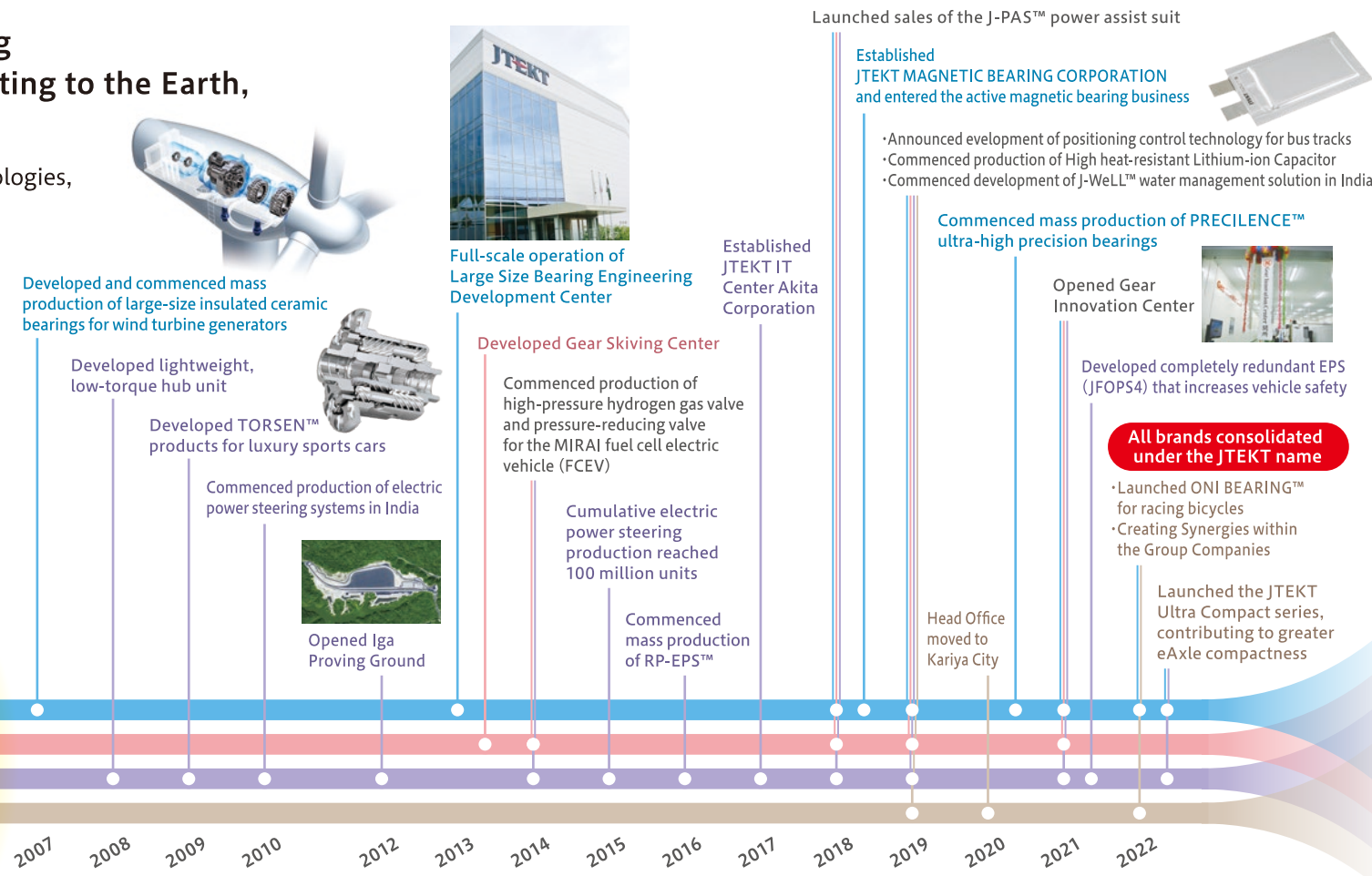
Taking on the challenge of being "No.1 & Only One" and contributing to the Earth, society, and our customers.

JTEKT's history began with elemental technologies, namely, bearings and machine tools. We provide No.1 & Only One products and services by advancing the technologies we have cultivated to solve all kinds of social issues and rising up to the challenge of engaging in various businesses.

2006

JTEKT

ESTABLISHED



Continuing to rise to the challenge through synergies and expansion of our four businesses.

- Industrial and Bearing Business Unit
- Machine Tools & Manufacturing Systems Business Unit
- Automotive Business Unit
- Aftermarket Business Unit/ Other Business



Bearings for Industrial Machinery



"G Series" CNC Cylindrical Grinders



Steer-by-Wire (J-EPICS™)



ONI BEARING™

A Mission to
Support Industry

INDUSTRIAL AND BEARING BUSINESS UNIT

Bearings featuring state-of-the-art technology expand the possibilities of "movement."

JTEKT develops and manufactures bearings for all types of industries. From automobiles and wind power generation to Shinkansen bullet trains, we support the development of industries throughout the world behind the scenes.

▶ Bearings for Electric Vehicles

The growing shift to EVs has increased demand for the eAxle. Aiming to counter the damage (electric pitting) that occurs when electricity flows through the bearings used for a motor, we aggregated the JTEKT Group's elemental technologies to develop insulated-type and conductive-type electric pitting preventive bearing. These bearings resolve the issues of abnormal noise in bearing rotation and reduced bearing service life, thus helping to make eAxle even more reliable.



▶ Bearings for Wind Power Generation

Various different bearings are used in wind power generators, such as bearings for main shafts, gearboxes, and generators. Their performance has a major effect on the efficiency in generating power. Long service life and high reliability are required of these bearings. JTEKT was the first company in the world to succeed in developing and mass producing ceramic bearings for electric power generation, helping to spur wider use of renewable energy and contributing to the goal of a decarbonized society.



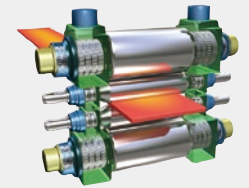
▶ Bearings for Construction Equipment

Bearings for construction equipment are used in severe operating environments. We provide long-life, highly durable bearings for specific uses, developed through application of the latest technologies cultivated in other fields assuming use in environments with dust, mud, and excessive loads from vibration and shock.



▶ Bearings for Steelmaking Equipment

Enduring temperatures reaching 1200 °C of red-hot iron and other materials, our bearings for steelmaking equipment contribute to reduced energy consumption with superior stability and high efficiency during operations, while their extended maintenance cycles reduce costs and time for maintenance and inspection.



▶ Bearings for Machine Tool Spindles

Bearings for machine tool spindles must withstand high speeds and maintain high rigidity. JTEKT has adopted a special air lubrication system for bearings used in spindle units and other components, achieving the world's highest levels for both speed and rigidity.



▶ Large Size Bearing Engineering Development Center

The "Large Size Bearing Engineering Development Center" began full-scale operations in 2014, conducting evaluations and analyses under conditions close to those in actual usage environments. This facility aids in the development of bearings for industrial machinery including railway rolling stocks, wind power generators, and steelmaking equipment.



We actively suggest better machine tools and manufacturing systems, in order to enhance our customer's manufacturing value.

JTEKT will strive to create a new value by crossing machine tools, such as grinders and machining centers, with solutions such as robotization and introduction of artificial intelligence with IoE* technology. Throughout supporting our customer's sustainable manufacturing, we contribute to develop the industry.

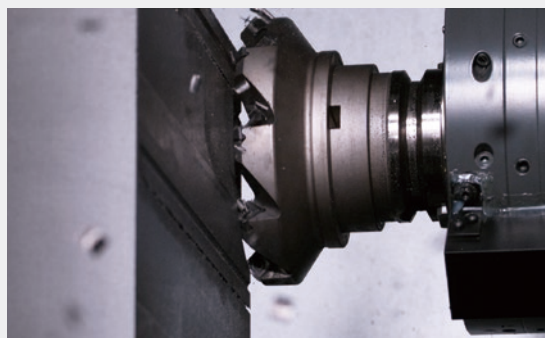
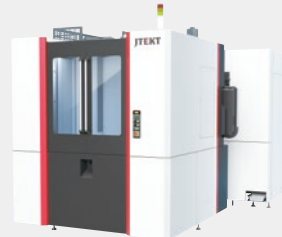
▶ Cylindrical Grinders

JTEKT's cylindrical grinders have gained the trust of our customers thanks to their outstanding quality and productivity, and we now boast the top market share in Japan. Continuous development of our unique and evolving technologies, our hybrid static-dynamic pressure fluid bearings, and the high productivity capability we have accumulated in the auto industry enables us to offer top-quality machines at reasonable prices. These machines support manufacturing industries around the world.



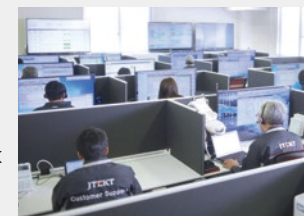
▶ Machining Centers

Building upon the high reliability and technologies we've developed in the automotive business, we offer high-quality machinery with enhanced functionality, and at reasonable prices. We suggest the most suitable machines for customers in the increasingly electrified automotive industry, as well as in semiconductors, constructions and agricultural machinery, railways, and other industries. Our machining centers have earned the trust of our customers around the world.



▶ Customer Support

Our experienced specialists support manufacturing as our customers' partner in production. We support in production and operation, strive to gain technical knowledge and manufacturing maintenance skills, and also work for rapid restoration from disasters that may occur. Furthermore, we continue to support our customers around the world through our network of overseas bases.



▶ IoE Solutions

Control technology has evolved to the point of visualizing operating status. In light of the shift to digitalization, we are building "IoE* solutions" that contribute to production sites' growth by linking equipment, people, and information. We offer new solutions with the aim of building smart factories where humans play the lead role, while also working to achieve carbon neutrality.



*IoE: Internet of Everything

The Imagination to
See the Future

IMAGINATION

AUTOMOTIVE BUSINESS UNIT

As a leading supplier, we will continue to innovate driving and turning.

JTEKT offers a lineup of steering systems that can be installed in vehicles ranging from small cars to large SUVs. We are also developing drive-line components and wheel hub units for electric vehicles and fuel cell vehicles, as our technological capabilities garner a reputation for excellence from car manufacturers around the world.

▶ Electric Power Steering (EPS)

JTEKT succeeded in developing and mass-producing the world's first electric power steering (EPS) system in 1988. We have the world's top share in this market—and have ever since production started. Determined to provide safer and more comfortable EPS, we continually focus on enhancing our technologies while striving to increase production efficiency, decrease product size and weight, and improve environmental performance. We are also developing new technologies designed to contribute to the autonomous driving society of the future.



▶ JTEKT Iga Proving Ground

This 500,000 m² test course is located in Iga City, Mie Prefecture. Here we rigorously evaluate and analyze products to ensure we offer only superior products to the world. We strive to manufacture high-performance, high-quality products that exceed our customers' expectations.



▶ Products for Fuel Cell Vehicles

Use of fuel cell vehicles will become increasingly widespread in the environmentally friendly hydrogen society. Thus we have developed and are producing high pressure hydrogen valve and high pressure hydrogen regulator that these vehicles require, while our constant effort to develop our technology contributes to the popularization of fuel cell vehicles.



▶ "Ultra Compact series" a Boon to Electric Vehicles

Our effort to downsize the eAxle drive system for electric vehicles has involved finding synergies by transcending the boundaries between businesses. We have developed new compact differential gears, bearings, and oil seals. Combining these three products results in further reductions in the eAxle's size and weight and helps electric vehicles achieve better mileage and extended cruising range.



▶ Drive Shafts—Sustaining the "Running" Element of All Automobiles

The drive shaft is a mechanism that transmits power from the vehicle's engine to the tires at a constant speed at any angle. It is an essential component for both gasoline powered and electric vehicles. JTEKT started mass production of drive shaft in 1980. We will continue in our efforts to improve transmission efficiency and enhance ride comfort as we stay abreast of our customers' needs.



Protection for
Our Customers

PROTECTION AFTERMARKET BUSINESS UNIT

Aiming to Be an Indispensable Presence in the Repair and Product/Service Markets.

JTEKT is also creating new value in the repair market as a solution partner, supporting our customers throughout their product's life cycle. We provide the world with a diverse range of products, services, and satisfaction.

Worldwide Support for Repair Needs

Aiming to secure top share in the automobile repair market, JTEKT is working to develop bearings as well as new steering systems, drive-line, and other products while enhancing our service system. With a particular focus on developing emerging markets in African countries and other areas where new demand for repair is expanding, we aim for sustainable growth which will enable us meet the needs of our customers around the world.



Support Throughout the Product Life Cycle

We provide repair parts and services that enable our customers to extend the service life of our products. In the automobile repair field particularly, we have begun sales of repair products for steering systems, which has been met by praise from many customers. We plan to continue enhancing our lineup with drive-line products and other products, providing repair parts and services that meet the expectations of the wide-ranging used car market.



Meeting the End User's Needs

We released Bearing Defender, a diagnostic product that assesses the state of bearings used in customers' machinery. Vibration sensors linked with a smartphone or tablet app comprise a system that anyone can use to diagnose bearing condition quickly and easily. We also developed ONI BEARING™, a ceramic bearing for racing bicycles. Helping users achieve a smoother ride, this upgrade part is a huge hit with many cyclists.



Our Commitment to the Future

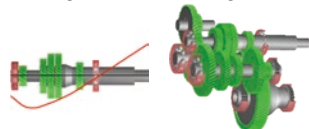
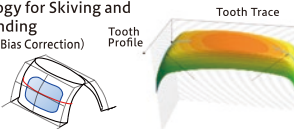

COMMITMENT SOWING SEEDS FOR THE FUTURE

Venturing widely into new domains to open up the future and create new value.

JTEKT creates new businesses by matching technologies we have developed previously with the needs expressed in social issues. We will continue to create new "No. 1 & Only One" solutions, providing value beyond what our customers expect.

► Gear Business

Electric vehicles and industrial robots require gears with higher precision. With all of the manufacturing-related material, heat treatment, and processing technologies we possess, the JTEKT Group is augmenting company efforts in the gear business. As an example, we opened our "Gear Innovation Center" based on the concept of "Bringing your ideal gears to the world."

<p>Gear and Bearing Simulation Technologies</p> 	<p>Contributing to the Optimization of Gear and Bearing Structures</p>
<p>3D Tooth Flank Correction and Processing Technology for Skiving and Gear Grinding (End Relief, Bias Correction)</p> 	<p>Contributing to lower noise, faster rotation, and smaller size of gears</p>
<p>Optimal suggestions for all processes, from raw materials to finished product</p> 	<p>Helps lower gear manufacturing costs</p>

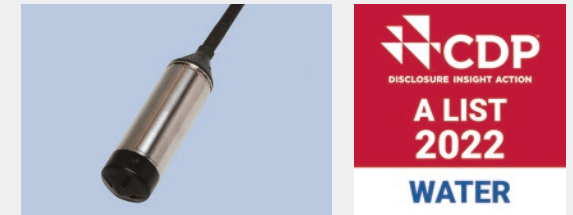
► Energy Solutions

Practical application of High heat-resistant Lithium-ion Capacitors that can be used as a "buddy" for batteries and other main power sources. With these, we aim to contribute not only to the auto industry, but all industries. We are also focusing on formic acid, a surplus resource, to advance development of fuel cells featuring highly efficient power generation, making full use of the manufacturing technologies we have accumulated over the years for catalysts and other components in fuel cell power generation.



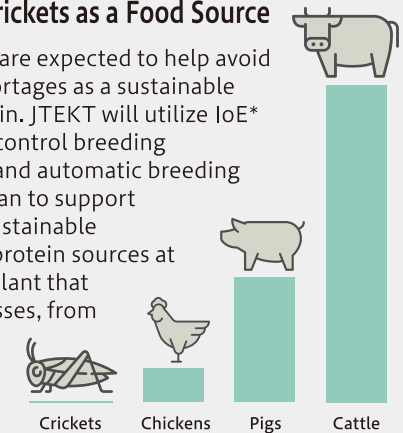
► Solutions to Water-Related Social Issues

In the effort to achieve a circular economy, JTEKT promotes a variety of initiatives to reduce and recycle waste and water resources such as promoting innovation in production technologies, cutting the amount of materials used by reducing processing itself, and applying improvements and ingenuity at our production sites. In addition, our involvement in developing long-life, power-saving water level gauges contributes to the prevention of internal and external flooding and helps support safe and secure infrastructure.



► Cultivating Crickets as a Food Source

Edible crickets are expected to help avoid future food shortages as a sustainable source of protein. JTEKT will utilize IoE* technology to control breeding environments and automatic breeding systems. We plan to support efficient and sustainable production of protein sources at an integrated plant that cover all processes, from breeding to processing.



*IoE: Internet of Everything

Greenhouse Gas Emissions (per kg Weight Gain)

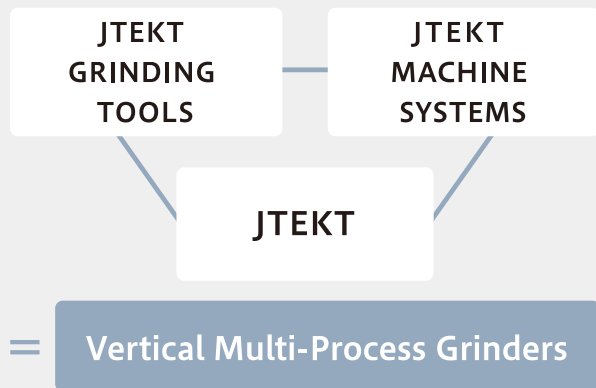
SYNERGY GROUP LINKS

Creating Synergy in Our Operations

Combining our independent technologies in our aim to grow further as an integrated group.

The JTEKT group comprises nearly 130 companies in Japan and overseas, with each having its own unique technological strengths and sales networks. Starting off with our brand unification in 2022, we are strengthening cooperation between groups and generating synergies in development, production, and sales.

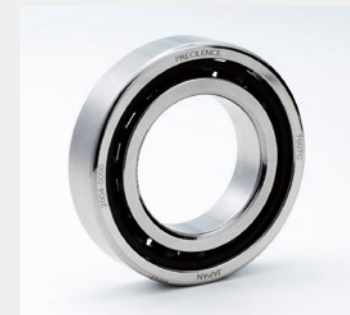
▶ Efforts and results from collaboration among groups



Adding the grinding wheel technology of JTEKT GRINDING TOOLS to JTEKT MACHINE SYSTEMS strengths to vertical multi-process grinders, we propose a new form of manufacturing in the growing domains of robotics, semiconductor fabrication equipment, machine tools, agricultural and construction equipment, and energy industry equipment.



As a machine tool manufacturer, JTEKT also uses bearings. To improve machining accuracy of our machining centers, the JTEKT group jointly developed spindle bearings that outperform conventional products. Featuring the highest levels of accuracy in rotational performance, PRECILENCE™ bearings are used not only in machine tools, but in variety of other industries as well.



The JTEKT Group includes manufacturing companies with high technological capabilities and sales companies maintaining extensive networks. Leveraging the links among them, the JTEKT Group is activating "cross-sales activities" that enable us to suggest and sell the optimal products to each customer.



JTEKT's Approach to CSR

For society's sustainable development, JTEKT always keeps CSR (Corporate Social Responsibility) in mind.

Our Approach to CSR (Corporate Social Responsibility)

The JTEKT group focuses on fulfilling its mission of "Seek to contribute to the happiness of people and the abundance of society through product manufacturing," and engages in business activities in harmony with the economy, society, and the environment based on our Corporate Code of Conduct. As a good corporate citizen, we work to resolve social issues together with our customers and suppliers who share this mindset in order to continue contributing to the sustainable development of society and the world.

Corporate Code of Conduct

Responsibility to Our Customers and Business Partners

- ◎ Based on a law-abiding spirit, we will conduct fair, transparent, freely competitive, and appropriate transactions.
- ◎ Inspired by the market, we provide the best quality, technology, and service to satisfy our customers and earn their trust.

Responsibility to Our Shareholders

- ◎ We maintain close communication not only with shareholders but also with society at large and disclose corporate information in a fair and proper manner while continuously working to improve our corporate value.

Responsibility to Employees

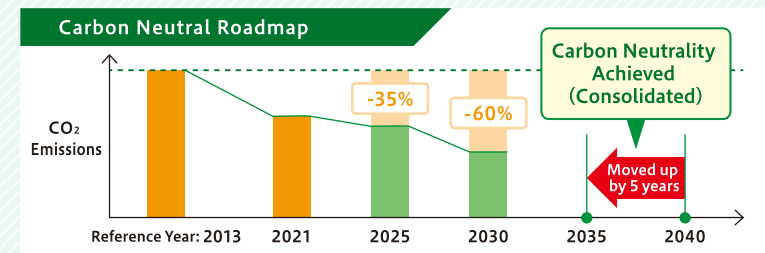
- ◎ We respect the personality and individuality of our employees, create safe workplaces where their potential and job satisfaction are valued, and strive to provide each with a prosperous living.

Contributing to Local Communities and Global Society


- ◎ As a good corporate citizen, we vigorously pursue activities that contribute to society.
- ◎ We abide by international rules and observe the laws, cultures, and customs of every country and region where we have operations, while further seeking to contribute to their growth and development.
- ◎ We voluntarily and proactively address global environmental issues with the profound awareness that this is one of the company's most important missions.

Working to Achieve Carbon Neutrality For Our Irreplaceable Earth.

Efforts to achieve carbon neutrality have accelerated recently, both in Japan and overseas. In response to this situation, JTEKT announced the company will change its previous goal of achieving carbon neutrality by 2040, moving the target ahead five years to 2035 by employing the "All JTEKT" approach. Demonstrating JTEKT's seriousness about achieving carbon neutrality, this expresses that all employees have a sense of ownership and are determined to continue with the challenge of passing on our irreplaceable Earth to the next generation.



COMPANY OVERVIEW

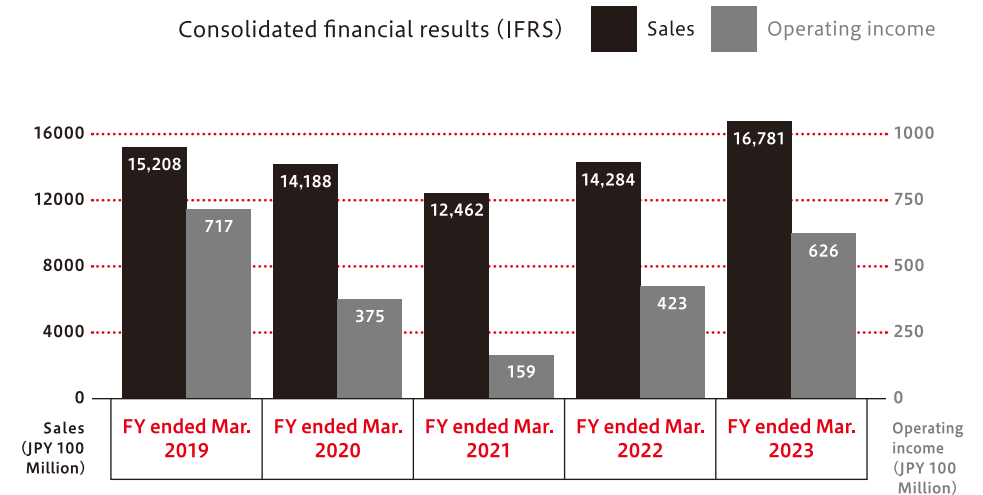
Company name	JTEKT CORPORATION
Company logo	
Head office locations	1-1 Asahi-machi, Kariya, Aichi Pref., 448-8652 JAPAN Tel: +81-566-25-7211
Main business activities	Manufacturing and sales of steering systems, bearings, driveline components, machine tools and electronic control devices.
Capital	45.5 billion yen (as of Mar. 2023)
Sales	Consolidated: 1678.1 billion yen (in FY ended Mar. 2023) Nonconsolidated: 695.2 billion yen (in FY ended Mar. 2023)
Number of employees	Consolidated: 46,053 (as of Mar. 2023) Nonconsolidated: 11,412 (as of Mar. 2023)

OFFICER LIST

President, Member of the Board	Kazuhiro Sato
Senior Executive Officer, Member of the Board	Takumi Matsumoto / Kouichi Yamanaka
Outside Director, Member of the Board	Iwao Okamoto / Yuichiro Kato
Outside Director, Member of the Board	Kazunari Kumakura
Audit & Supervisory Board Member	Makoto Sano / Kouichi Tsujita
Outside Audit & Supervisory Board Member	Yumiko Sakurai / Yasushi Matsui
Senior Executive Officer	Kenichi Ishioka / Akito Tachibana
Senior Executive Officer	Koji Yoshida / Toshiaki Shinya
Senior Executive Officer	Asahiko Hasebe / Shingo Sasaki
Senior Executive Officer	Yoshihisa Miura

FINANCIAL DATA

© Financial Results for Past Five Years



© Sales by Region / Segment for Fiscal Year Ended March 2023

Sales by Segment (JPY 100 Million)

Steering systems	Driveline components	Industrial & Bearings	Machine tools
8,062	3,363	3,515	1,839
48.1%	20.0%	20.9%	11.0%

Sales by Region (JPY 100 Million)

Japan	North America	Europe	Asia, Oceania, other
6,384	4,001	1,962	4,433
38.0%	23.8%	11.7%	26.5%

HEADQUARTER

● Headquarter

1-1 Asahi-machi, Kariya, Aichi Pref., 448-8652 JAPAN
TEL : +81-566-25-7211

PLANTS / R&D OFFICE

● Kanto Plant(Sayama)

1-5-14 Shinsayama, Sayama, Saitama Pref., 350-1331 JAPAN
TEL : +81-4-2968-2311

TORSEN Differential

● Kanto Plant(Hamura)

3-5-1 Sakae-cho, Hamura, Tokyo 205-0002 JAPAN
TEL : +81-42-554-1111

Needle roller bearings, constant velocity joints, drive shafts, propeller shafts

● Toyohashi Plant

5-61 Akemi-cho, Toyohashi, Aichi Pref., 441-8074 JAPAN
TEL : +81-532-23-2411

Hydraulic power steering, manual steering, collapsible steering columns

● Okazaki Plant

8 Kiriyama, Ichiba-cho, Okazaki, Aichi Pref., 444-3593 JAPAN
TEL : +81-564-48-2321

AWD couplings, linear solenoid valves for AT and CVT, oil pumps for AT and CVT, propeller shafts, cast parts

● Hanazono Plant

1-10 Miyama, Shinpukuji-cho, Okazaki, Aichi Pref., 444-2106 JAPAN
TEL : +81-564-27-3111

Electric power steering, hydraulic power steering pumps, electric control units

● Higashi Kariya Office

1-7 Kitajizouyama, Noda-cho, Kariya, Aichi Pref., 448-0803 JAPAN
TEL : +81-566-21-8611

Research & Software Development

● Kariya Plant

1-1 Asahi-machi, Kariya, Aichi Pref., 448-8652 JAPAN
TEL : +81-566-25-5111

Machine tools, Mechatronics, machined parts

● Tadomisaki Plant

1-5-3 Tado-cho, Takahama, Aichi Pref., 444-1323 JAPAN
TEL : +81-566-53-3611

Driveshafts, AWD couplings

● Kameyama Plant

805-18 Sakaino-o, Talkoji-cho, Kameyama, Mie Pref., 519-0168 JAPAN
TEL : +81-595-83-1751

Ball bearings, clutch bearings, clutch pulleys for alternator, hub units

● Nara Plant

333 Toichi-cho, Kashihara, Nara Pref., 634-8555 JAPAN
TEL : +81-744-24-1111

Electric power steering, electric pumps for hydraulic-electric type power steering, hydraulic power steering, manual steering

● Kokubu Plant

24-1 Kokubuhiganjo-cho, Kashiwara, Osaka Pref., 582-8588 JAPAN
TEL : +81-72-977-1111

All types of ball and roller bearings, super large bearings, high-precision bearings

● Tokushima Plant

1 Yamahata, Okuno, Aizumi-cho, Itano-gun, Tokushima Pref., 771-1294 JAPAN
TEL : +81-88-692-3111

Ball bearings, water pump bearings, cylindrical roller bearings, special environment bearings, double row angular contact ball bearings, hub units, tensioner pulleys

● Kagawa Plant

515-1 Umayado, Higashikagawa, Kagawa Pref., 769-2902 JAPAN
TEL : +81-879-33-5511

Tapered roller bearings

TEST COURSE

● Iga Proving Ground

2254-1 Marubashira, Iga, Mie Pref., 518-1325 JAPAN

SALES OFFICES

● Osaka Office

1-3-7 shiromi, Chuo-ku, Osaka Pref., 540-0001 JAPAN
TEL : +81-6-4790-8115

● Higashinoh Branch Office

7-11-15 Ginza, Chuo-ku, Tokyo 104-0061 JAPAN
TEL : +81-3-3572-5102 [Bearing-related products]
TEL : +81-3-3571-6213 [Machine tools]

● Tohoku Business Office

3-1-41 Oroshimachihigashi, Sendai Wakabayashi-ku, Miyagi Pref., 984-0002 JAPAN
TEL : +81-22-287-6735

● Nigata Business Office

2-2-27 Kandouji, Chuo-ku, Niigata, Niigata Pref., 950-0983 JAPAN
TEL : +81-25-245-8581

● Utsunomiya Business Office

1-6-12 Higashisyukugo, Utsunomiya, Tochigi Pref., 321-0953 JAPAN
TEL : +81-28-610-5330

● Chiba Business Office

3-13 Shinmachi, Chuo-ku, Chiba, Chiba Pref., 260-0028 JAPAN
TEL : +81-43-245-2877

● Kanagawa Business Office

3-1-1 Kotobuki-cho, Atsugi, Kanagawa Pref., 243-0003 JAPAN
TEL : +81-46-297-7310

● Gunma Business Office

1500-1 Ryumai-cho, Ota, Gunma Pref., 373-0806 JAPAN
TEL : +81-276-46-2564

● Kitakanto Branch Office

1-6-12 Higashisyukugo, Utsunomiya, Tochigi Pref., 321-0953 JAPAN
TEL : +81-28-634-7610

● Ota Business Office

1500-1 Ryumai-cho, Ota, Gunma Pref., 373-0806 JAPAN
TEL : +81-276-47-0030

● Kanto Branch Office

3-1-1 Kotobuki-cho, Atsugi, Kanagawa Pref., 243-0003 JAPAN
TEL : +81-46-294-5400

● Nakanihon Branch Office

2-2 Showa-cho Kariya, Aichi Pref., 448-0029 JAPAN
TEL : +81-566-25-9450
TEL : +81-566-25-9453 [Bearing-related products]
TEL : +81-566-25-9454 [Machine tool]

● Tokai Branch Office

224-7 Tamachi, Chuo-ku, Hamamatsu, Shizuoka Pref., 430-0944 JAPAN
TEL : +81-53-451-8650

● Toyota Branch Office

1-1 Kotobuki-cho, Toyota, Aichi Pref., 471-0834 JAPAN
TEL : +81-565-28-2215

● Kansai Branch Office

1-3-7 shiromi, Chuo-ku, Osaka Pref., 540-0001 JAPAN
TEL : +81-6-4790-8105 [Automotive related]
TEL : +81-6-4790-8102 [Industrial and Bearing relationship]
TEL : +81-6-4790-8103 [Machine tool related]

● Kobe Business Office

1-29 Taruya-machi, akashi, Hyogo Pref., 673-0890 JAPAN
TEL : +81-78-915-2977

● Kyoto Business Office

30-1, Nishikujo Zao-cho, Minami-ku, Kyoto, Kyoto Pref., 601-8414 JAPAN
TEL : +81-75-693-7050

● Hokuriku Business Office

3-7-13 Ekinishihonmachi, Kanazawa, Ishikawa Pref., 920-0025 JAPAN
TEL : +81-76-224-5960

● Okayama Business Office

3-1-18 Daiku, Kita-ku, Okayama, Okayama Pref., 700-0913 JAPAN
TEL : +81-86-233-3341 [Bearing-related products]
TEL : +81-86-233-3351 [Machine tools]

● Shikoku Business Office

1516-2 Tahishimomachi, Takamatsu, Kagawa Pref., 761-8075 JAPAN
TEL : +81-87-815-3410

● Nishinoh Branch Office (Hiroshima)

2-21-22 Shinonome-hommachi, Minami-ku, Hiroshima Pref., 734-0023 JAPAN
TEL : +81-82-282-4184

● Nishinoh Branch Office (Kyushu)

3-3-15 Katano, Kokurakita-ku, Kitakyusyu, Fukuoka Pref., 802-0064 JAPAN
TEL : +81-93-951-6551 [Bearing-related products]
TEL : +81-93-951-6638 [Machine tools]

CUSTOMER SUPPORT

● Customer Center

1-1 Asahi-machi, Kariya, Aichi Pref., 448-8652 JAPAN
TEL : +81-566-25-5161 [Grinder Support]
TEL : +81-566-25-5165 [Machining Center Support]
TEL : +81-566-25-5385 [Special Purpose Machine Support]
TEL : +81-566-25-8291 [Mechatronics Support]

● Tohoku Support Center

3-1-41 Oroshimachihigashi, Sendai Wakabayashi-ku, Miyagi Pref., 984-0002 JAPAN
TEL : +81-22-288-0070

● Gunma Support Center

1500-1 Ryumai-cho, Ota, Gunma Pref., 373-0806 JAPAN
TEL : +81-276-46-2564

● East JAPAN Support Center

6-13 Yahata, Kawashima-cho, Hiki-gun, Saitama Pref., 350-0193 JAPAN
TEL : +81-49-297-9905

● Niigata Support Center

2-2-27 Shintouji, Chuo Ward, Niigata City, Niigata Pref., 950-0983 JAPAN
TEL : +81-25-245-8581

● Hokuriku Support Center

3-7-13 Ekinishihonmachi, Kanazawa City, Ishikawa Pref., 920-0025 JAPAN
TEL : +81-76-248-5722

● Hamamatsu Support Center

224-7 Tamachi, Naka-ku, Hamamatsu, Shizuoka Pref., 430-0944 JAPAN
TEL : +81-53-451-8660

● West JAPAN Support Center

35-13 Toyotsu-cho, Suita-shi, Osaka Pref., 564-0051 JAPAN
TEL : +81-6-6310-7051

● Okayama Support Center

3-3-18 Daiku, Kita-ku, Okayama, Okayama Pref., 700-0913 JAPAN
TEL : +81-86-233-3351

● Hiroshima Support Center

2-21-22 Shinonome-hommachi, Minami-ku, Hiroshima Pref., 734-0023 JAPAN
TEL : +81-82-282-8881

● Kyushu Support Center

3-3-15 Katano, Kita-ku, Okayama, Kitakyushu City, Fukuoka Pref., 802-0064 JAPAN
TEL : +81-93-951-6638

DOMESTIC AFFILIATES

● JTEKT MACHINE SYSTEMS CORPORATION

2-34 Minami Uematsu-cho, Yao, Osaka Pref., 581-0091 JAPAN
TEL : +81-72-922-7881
<https://www.machine.jtekt.co.jp/english/>

Manufacture and sales of machine tools, mechanical parts, and automotive components

● JTEKT FLUID POWER SYSTEMS CORPORATION

45 Kaizan, Hatsuchi-cho, Okazaki, Aichi Pref., 444-3592 JAPAN
TEL : +81-564-48-2211
<https://www.jtekt-fluid.co.jp/en/>

Manufacture and sale of hydraulic and pneumatic devices, test devices and automotive components

● JTEKT SEALING TECHNO CORPORATION

39 Nishino, Kasagi, Aizumi-cho, Itano-gun, Tokushima Pref., 771-1295 JAPAN
TEL : +81-88-692-2711
<https://www.sealing.jtekt.co.jp/>

Manufacture of oil seals

● JTEKT COATING CORPORATION

28 Bawari, Noda-cho, Kariya, Aichi Pref., 448-0803 JAPAN
TEL : +81-566-21-1833
<https://coating.jtekt.co.jp>

Manufacture of Coating, heat-treatment and automotive components

● JTEKT THERMO SYSTEMS CORPORATION

229 Kabata-cho, Tenri, Nara Pref., 632-0084 JAPAN
TEL : +81-743-64-0981
<https://www.jtektthermos.com/>

Manufacture and sale of industrial heat-treatment furnaces, semiconductor manufacturing equipment, and PDP heat-treatment equipment

● JTEKT ELECTRONICS CORPORATION

4-9-1 Tenjin-cho, Kodaira, Tokyo, 187-0004 JAPAN
TEL : +81-42-341-3111
<https://www.electronics.jtekt.co.jp/en/>

Manufacture and sale of electronic control devices, imaging devices, automotive devices and FA control systems

● JTEKT PRECISION BEARING CORPORATION

2-8-1 Ayumino, Izumi, Osaka Pref., 594-1157 JAPAN
TEL : +81-725-53-1711
<https://www.precision.jtekt.co.jp/>

Manufacture and sales of bearings

● JTEKT FINETECH Co., Ltd.

585 Suzumenomiya-cho, Utsunomiya, Tochigi Pref., 321-0121 JAPAN
TEL : +81-28-653-1311
<https://www.jtekt-ft.co.jp/>

Manufacture of bearings

● JTEKT GRINDING SYSTEMS CORPORATION

1-3 Ejiri, Hishiike, Kota-cho, Nukata-gun, Aichi Pref., 444-0113 JAPAN
TEL : +81-564-62-1211
<https://www.grinding.jtekt.co.jp/en/index.html>

Design, manufacture, services, upgrade, and overhaul of grinder

● JTEKT GRINDING TOOLS CORPORATION

1-54 Shiroyama, Maigi-cho, Okazaki, Aichi Pref., 444-3594 JAPAN
TEL : +81-564-48-5311
<https://www.tools.jtekt.co.jp/en/>

Manufacture and sale of diamond tools

● JTEKT METALTEC CORPORATION

1626 Sanagu-cho, Iga, Mie Pref., 518-0001 JAPAN
TEL : +81-595-23-3285
<https://www.metaltec.jtekt.co.jp/en/>

Forging and turning of bearings, steerings, and automotive components, etc.

● JTEKT COLUMN SYSTEMS CORPORATION

2028 Washizu, Kosai, Shizuoka Pref., 431-0431 JAPAN
TEL : +81-53-575-2711
https://www.column.jtekt.co.jp/en/index_e.php

Manufacture and sales of steering columns, shifters, organization drive parts

● JTEKT GEAR SYSTEMS CORPORATION

3-45 Akatsuki-cho, Seto, Aichi Pref., 489-8550 JAPAN
TEL : +81-561-48-2221
<https://www.gear.jtekt.co.jp/en/index.html>

Manufacture and sale of automotive components, gears for general machinery, and gear processing machinery

● JTEKT METAL WORKS CORPORATION

8-79 Kanaiso-cho, Komatsushima, Tokushima Pref., 773-0007 JAPAN
TEL : +81-885-32-1553
<https://www.metalworks.jtekt.co.jp>

Turning of bearings

● JTEKT SURPRET CO., LTD.

4-47 Takefuchihigashi, Yao, Osaka Pref., 581-0053 JAPAN
TEL : +81-6-6709-7381
<http://www.jtekt-spt.co.jp/>

Turning, heat-treatment and grinding of bearings etc.

● EIKO SEIMITSU Co., Ltd.

176 Kureha, Higashikagawa, Kagawa Pref., 769-2905 JAPAN
TEL : +81-879-33-6831
<https://www.eiko-seimitsu.jp/>

Manufacture of the turning of a bearing and motor parts.

● TAIHO CO.,LTD.

176 Kureha, Higashikagawa, Kagawa Pref., 769-2905 JAPAN
TEL : +81-879-33-2100
<http://tyho.co.jp/>

Turning of bearings, etc.

● JTEKT FORMICS CORPORATION

1-15 Kitajizouyama, Noda-cho, Kariya, Aichi Pref., 448-0803 JAPAN
TEL : +81-566-21-8375
<https://www.formics.jtekt.co.jp/>

Design, manufacture and sales of sheet metal products

● JTEKT ENGINEERING CORPORATION

1-1 Asahi-machi, Kariya, Aichi Pref., 448-8652 JAPAN
TEL : +81-566-25-5428

Services, upgrade, and overhaul of production equipment system

● JTEKT SALES CORPORATION

1-3-7 shiromi, Chuo-ku, Osaka Pref., 540-0001 JAPAN
TEL : +81-6-4790-7777
<https://sales.jtekt.co.jp/>

Sales of bearings, oil seals, machines tools, automotive parts, electric tools, etc.

● MEIWA SHOUKO CO.,LTD.

7-11-15 Ginza, Chuo-ku, Tokyo 104-0061 JAPAN
TEL : +81-3-5537-5871
<http://www.meiwa-shouko.co.jp/>

Sales of bearing, oil seal, electronics and industrial equipment, etc.

● JTEKT HIGH-TECH CORPORATION

1-11-11 Yanagibashi, Taitou, Tokyo 111-0052 JAPAN
TEL : +81-3-3861-7941
<https://www.hightech.jtekt.co.jp/>

Design of machinery and press mold, development of business software and control software

● JTEKT SERVICE CO.,LTD.

3-5-8 Minamisenba, Chuo-ku, Osaka Pref., 542-0081 JAPAN
TEL : +81-6-6253-0686
<http://jtekt-service.jp/>

Insurance agency business, Security, Facility Management, Personnel affairs

● JTEKT IT CENTER AKITA CORPORATION

4-2-7 Nakadori, Akita, Akita Pref., 010-0001 JAPAN
TEL : +81-18-827-6767
<https://www.jtekt-ita.com/>

Development, design, evaluation, manufacture and sale of software and hardware of electronic control equipment

● JTEKT MAGNETIC BEARING CORPORATION

6-17 Honmachi, Neyagawa, Osaka Pref., 572-0832 JAPAN
TEL : +81-72-813-9196

Design, manufacture and sales of Active Magnetic Bearing devices and their component parts

JTEKT CORPORATE GUIDE

