



Micro-Graphic Panel "EA1 Series"



Presented here is a simplified 3.1 inch programmable micro-graphic display panel with touch panel.

This device combines the simplified graphic function as the human-machine interface with excellent operability of the touch panel function. By merely touching the screen (only touch panel type) to operate function keys, it has been made possible to have the graphic data from PLC converted and displayed.

Features

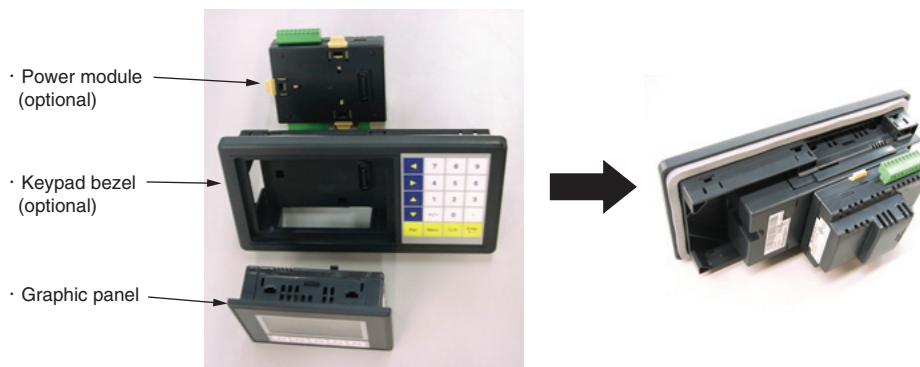
Model No.		Outlines
EA1-S3ML Touch panel		Screen size: 3.1 inches
	EA1-S3ML-N Non-touch panel	
		Number of dots: 128 × 64
		Back light: LED (selectable from 5 colors) Function keys: User-definable function keys (5 keys) with LED indicators
		Applicable standards: NEMA 4/4X IP-65 rating (when the device is suitably installed for limited use indoor.)
		When it is connected to Direct Logic PLC provided with a serial communication port (RJ12), power source is supplied to the panel through the serial communication port.
		When it is connected to a PLC made by a third party, DC power module [EA-MG-SP1] with serial port is required.

Composition

1) System composition





The system comprises the graphic panel and other optional devices.

- ◆ Example of system composition



KOYO ELECTRONICS INDUSTRIES CO., LTD.

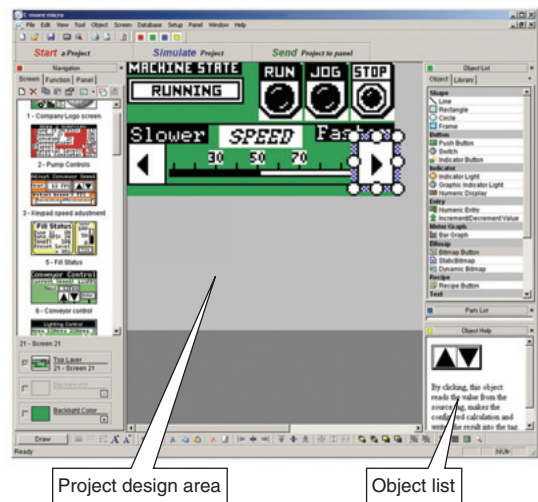
2) Optional devices

8 button keypad bezel	20 button keypad bezel	DC power module	DC power module with serial port
EA-MG-BZ1	EA-MG-BZ2	EA-MG-P1	EA-MG-SP1
			

It is possible to select appropriate combination of keypad bezel and power module depending on particular application. Also, various types of cables for communication are available.

3) Graphic programming software

- ① The graphic programming software is based on the technology derived from its family product, high-performance software ViewJetCmore.
- ② As the device is provided with many high-end functions, it can shorten the time required for the user to design the screen display.
- ③ Check of actions are made possible by the use of integral simulator prior to transmission of project.
- ④ Layout of parts is made possible by simply dragging and dropping the object from the object list to the project design area.



◆ Example of connection for programming (USB connection)

The following connection enables programming through the PC.

