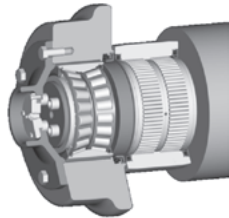


2nd Generation Bearing Unit for Pallet Cars on Sintering Machines (Iron and Steel Equipment)



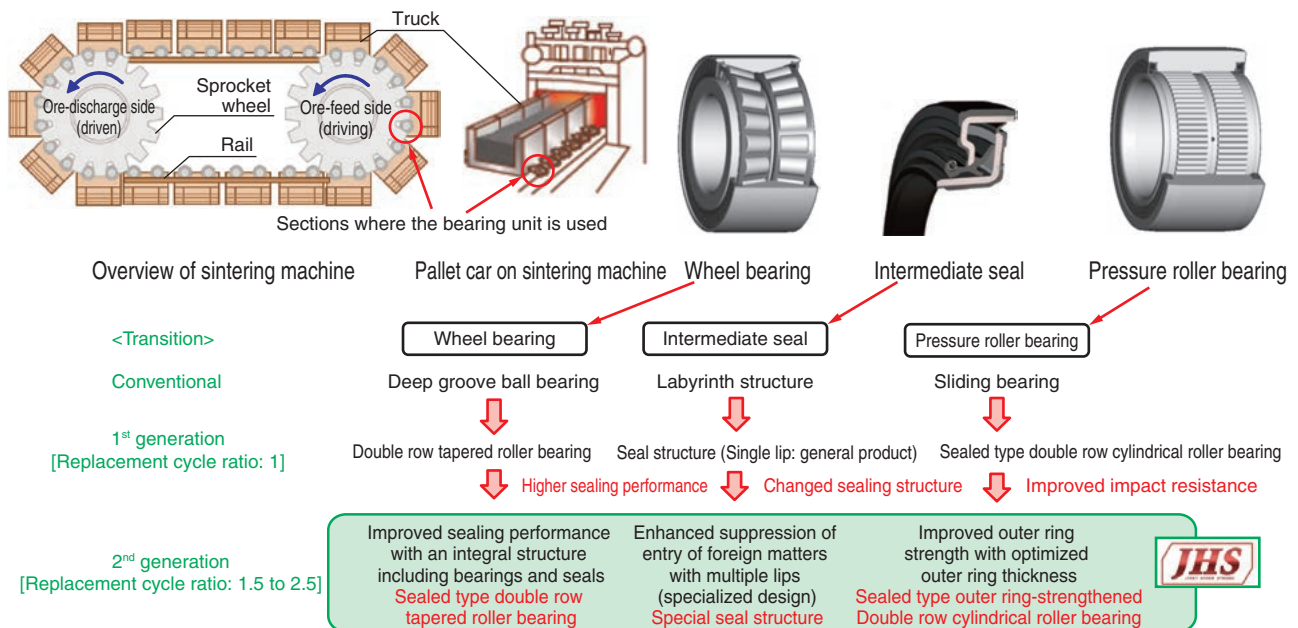
In recent years, with the aim of improving the production efficiency of sintering machines for iron and steel equipment, there is an ongoing trend of widening pallet cars on the sintering machines to increase their load capacity, and improving their heat conduction efficiency. This report introduces our 2nd generation bearing unit developed in response to the requirements for the pallet cars which have been getting more stringent.

Features

Three products are used in the bearing unit (wheel part) of pallet cars on sintering machines. The following shows the characteristics required for the products and the features of the developed products.

	Role	Required characteristic	Feature	Product size example (mm)
Wheel bearing	Support the weight of the pallet car and sintered item	High sealing performance	Double row tapered roller bearing with sealing performance	I.D. $\phi 110 \times$ O.D. $\phi 200 \times$ Width 100
Intermediate seal	Suppress entry of foreign matters into the wheel bearing	High sealing performance	Multiple lip structure	I.D. $\phi 190 \times$ O.D. $\phi 225 \times$ Width 18
Pressure roller bearing	Engage with the sprocket wheel	Outer ring strength	Cylindrical roller bearing with high outer ring rigidity	I.D. $\phi 160 \times$ O.D. $\phi 250 \times$ Width 140

Development transition



*1 JHS (JTEKT Hyper Strong) is a group of products specially designed for requirements of industrial machines and is a registered trademark of JTEKT.

(Industrial Machinery Application Engineering Dept., Bearing Operations Headquarters)

JTEKT CORPORATION